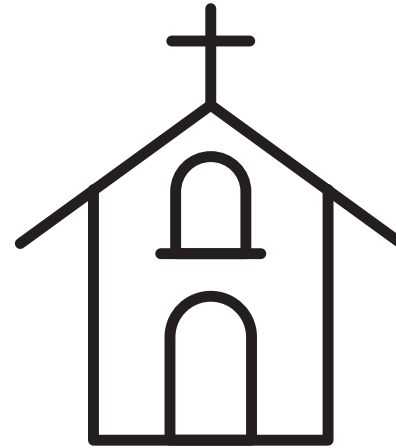
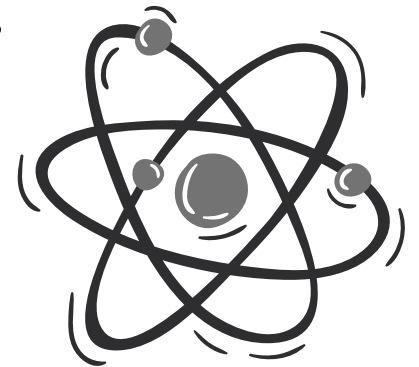


*Reconciling faith & science*  
creating my own theory

# *Faith*

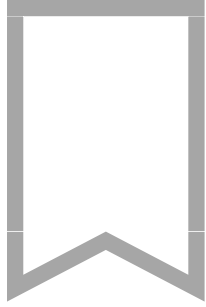


or?  
versus?  
AND?



# *Science*

Confirmation Sept. 2020  
Immanuel Lutheran Church



"For my thoughts are not your thoughts, neither are your ways my ways," declares the LORD. "For as the heavens are higher than the earth, so are my ways higher than your ways and my thoughts than your thoughts."

ISAIAH 55:8-9 ESV

*In the beginning...*  
creation and evolution

Young Earth View

---

Old Earth View/Day-Age View

---

Theistic Evolution View

---



*Food for thought:*

*Do I have to have all the answers and knowledge to believe something is true?*

# CERTAINTY + UNCERTAINTY

can we bridge the disconnect?

Just because there is uncertainty present does not mean you can't believe something to be true.

It's like the examples Bryan Enderle gave on love and marriage. You can't prove that someone loves you, but you know when they do. And most people still feel nervous at the uncertainty of life ahead on their wedding day, but they still get married.

Consider your faith. You probably believe things you can't prove.

**THAT IS OK.**

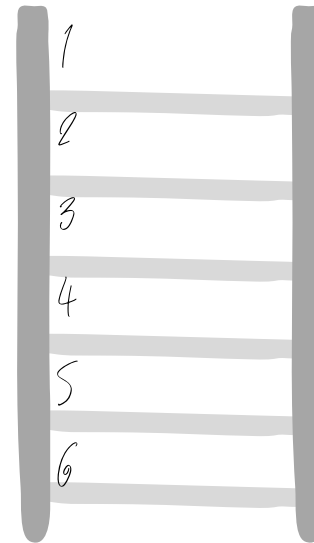
Certainty and uncertainty can exist in the same space.

We can know God exists without proving it to be true. We can trust God because of the way God is still involved in creation - in us - today.

Where do you see God in life and creation?

## *In the beginning...* how universe came to be

*Creation*  
Genesis 1

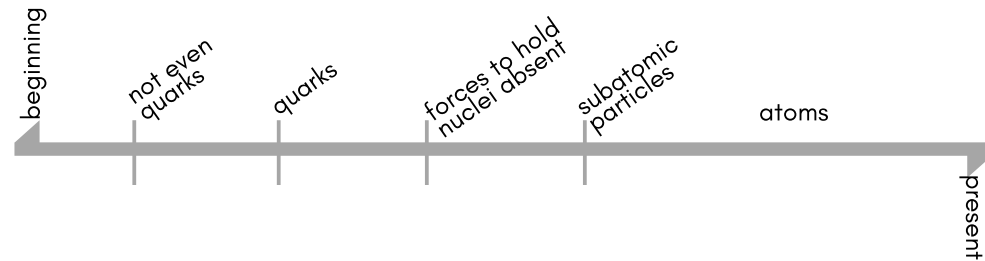


...and God saw that it was \_\_\_\_\_.

Before God starting creating, what was the one "thing" present?

## *Big Bang Expansion Theory* "The beginning of the universe for beginners"

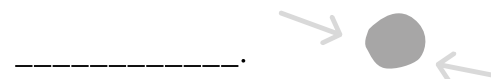
Existence is assumed to be \_\_\_\_\_.



Because the universe is always



scientists believe it must have originated from one single

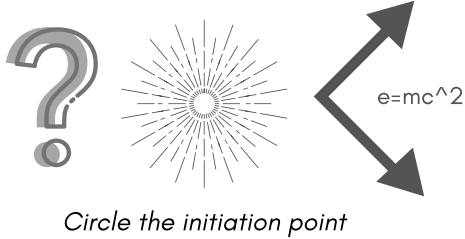
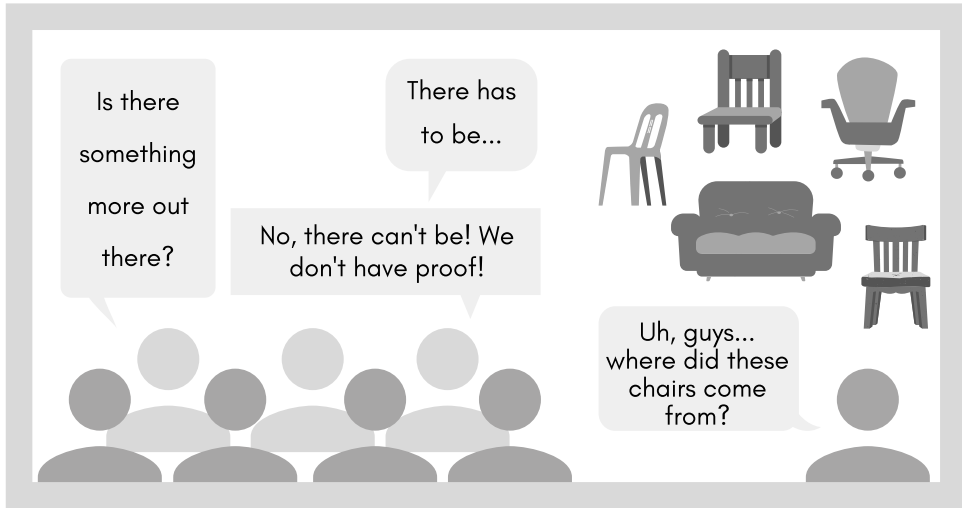


*"Such knowledge is too wonderful  
for me;  
it is high; I cannot attain it."*

PSALM 139:6

# Can God and science share the same space?

Bryan Enderle, TedxACCD



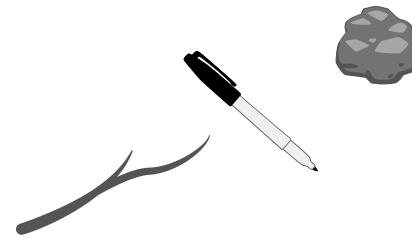
Does science know/suggest an initiation point?

Does theology know/suggest an initiation point?

"WE ALL MUST GIVE AN EXPLANATION THAT IS METAPHYSICAL AND LIES OUTSIDE OF WHAT WE KNOW IN ORDER TO DESCRIBE THE MYSTERIOUS BEGINNINGS OF OUR UNIVERSE."

-Bryan Enderle

the pen thought experiment



I have a pen. Did someone make the pen?  
How do you know?

I found the pen in the forest between a twig and a rock. Do you still think it has a source?

**SOURCE** → **PROCESS** → **SYSTEM**

Define

Define

Define

What category does science fall into?  
What category does faith fall into?